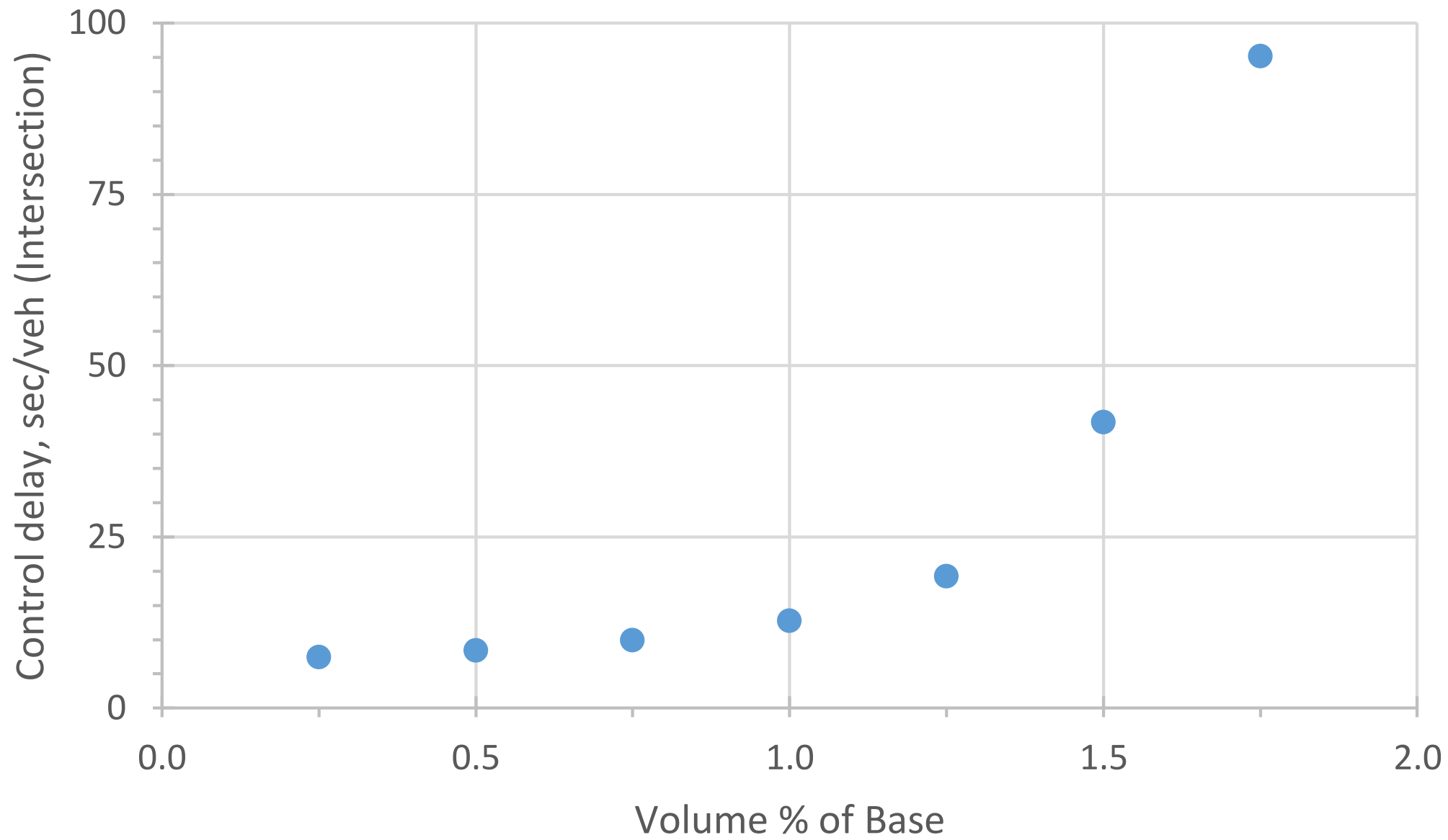
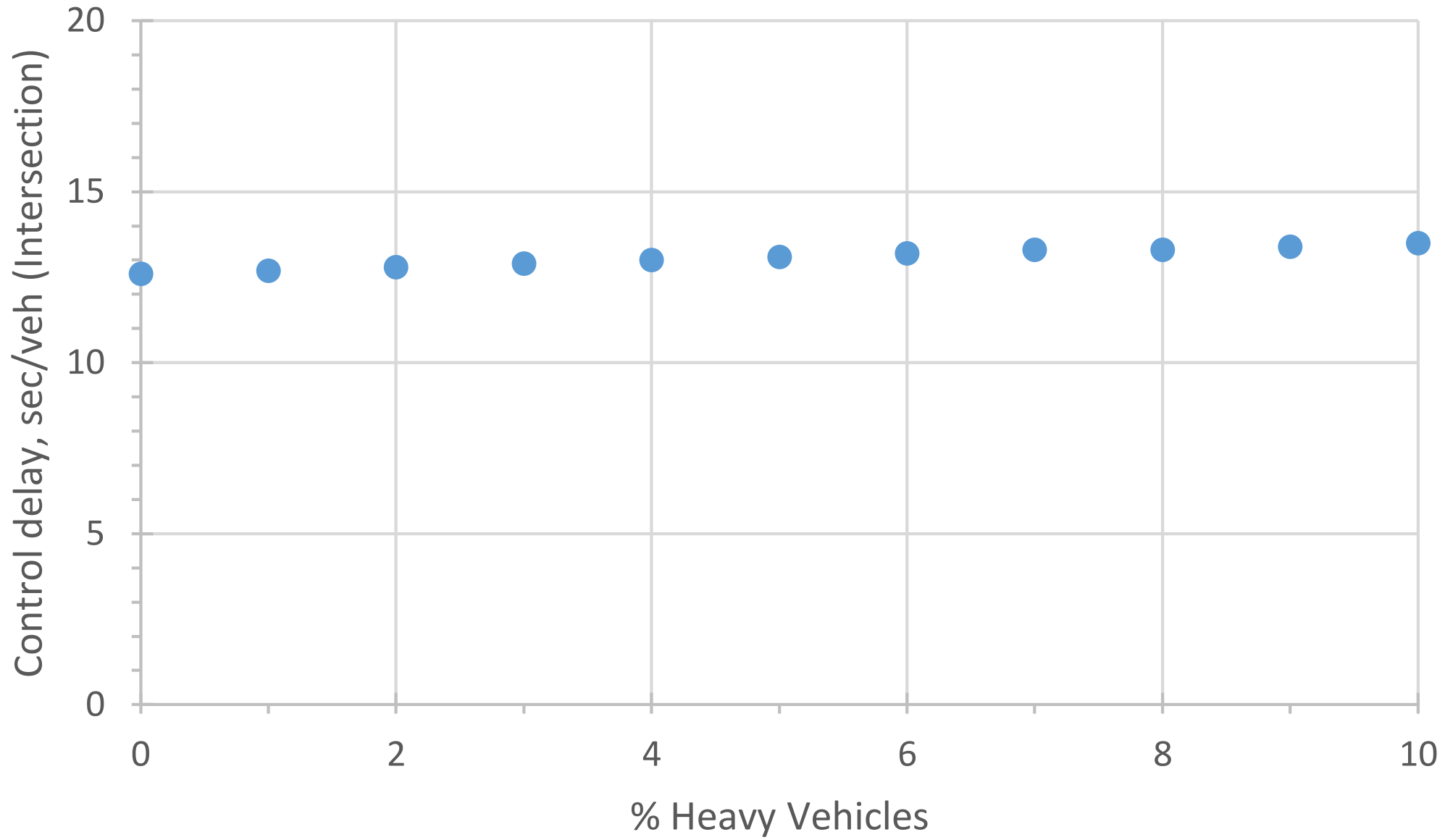
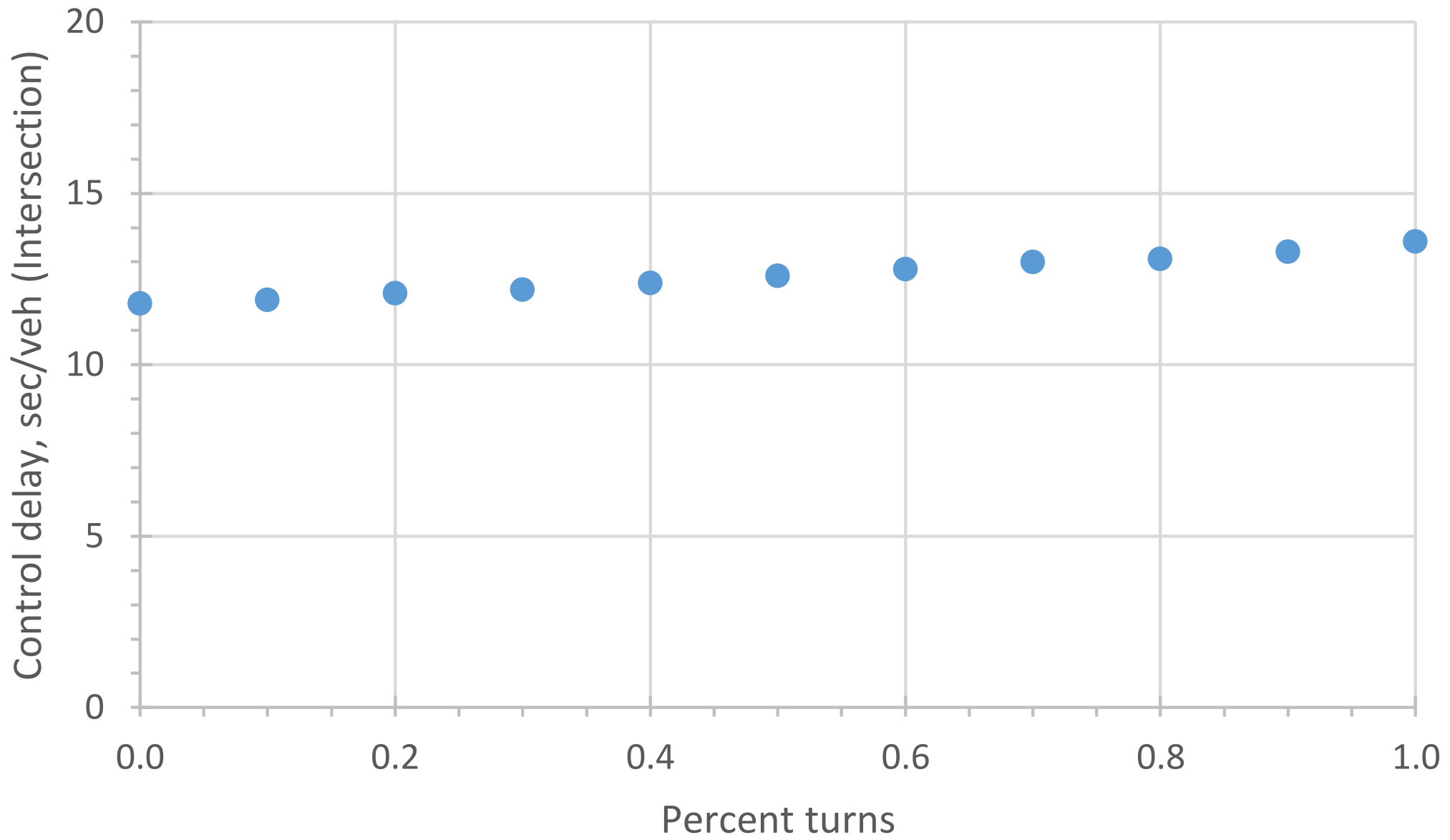


CE 572 – Spring 2015
Class 25

2015.03.25







Assignment 33 - Reading

Review the TWSC intersection methodology in the HCM 2010. Prepare a list any questions that you have on the reading.

- Level of service (pp 19.1-19.2)
 - Input data required (pp 19.2-19.3)
 - Methodology (pp 19.5-19.7 and exhibit 19.4 on p 19.8)
-

Assignment 34 - TWSC Intersection Application

Use the HCS to solve example problem 1 (pp 19.43-19.49). Verify each step of the HCM results with the HCS output. Identify any discrepancies or parts of the calculation that you don't understand. Prepare a 2-3 paragraph interpretation of the results.